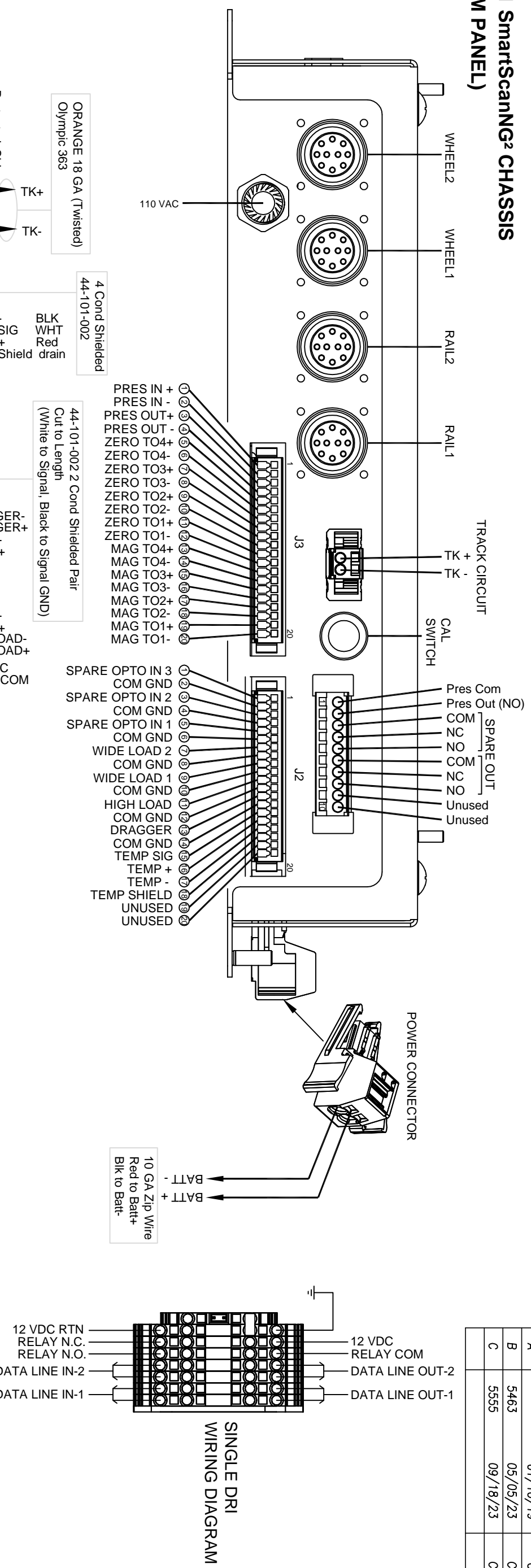
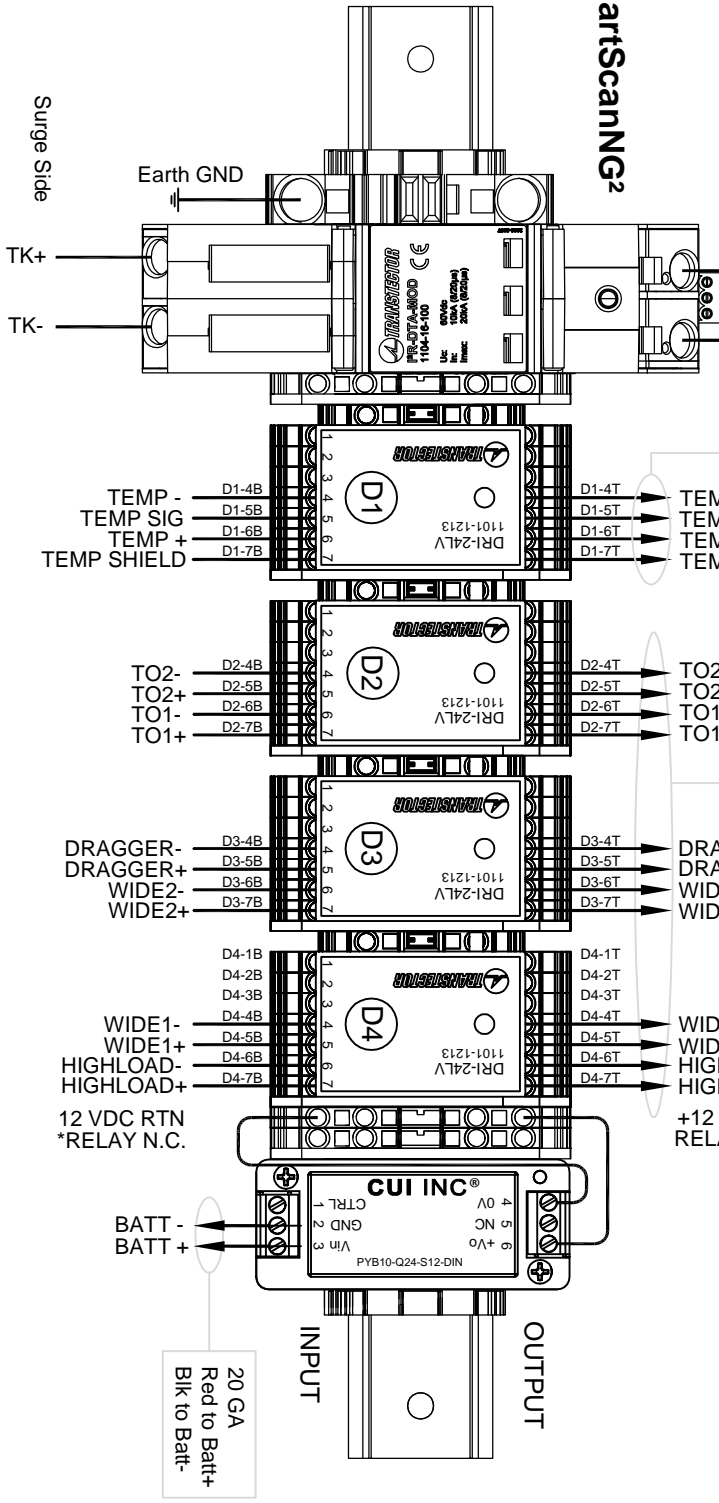


**2300-601 SmartScanNG² CHASSIS
(BOTTOM PANEL)**



**2300-556 SmartScanNG²
SURGE ASM**



*RELAY N.C. CONTACTS FROM EACH DRI ARE DAISY-CHAINED TOGETHER.

DRI WIRING CHART

SURGE PIN#	SIGNAL	NG ² PIN#
D1-4T	TEMP -	J2-17
D1-5T	TEMP SIG	J2-15
D1-6T	TEMP +	J2-16
D1-7T	TEMP SHIELD	J2-18
D2-4T	TO2-	J3-18 MAG or J3-10 ZERO
D2-5T	TO2+	J3-17 MAG or J3-9 ZERO
D2-6T	TO1-	J3-20 MAG or J3-12 ZERO
D2-7T	TO1+	J3-19 MAG or J3-11 ZERO
D3-4T	DRAGGER-	J2-14
D3-5T	DRAGGER+	J2-13
D3-6T	WIDE2-	J2-8
D3-7T	WIDE2+	J2-7
D4-4T	WIDE1-	J2-10
D4-5T	WIDE1+	J2-9
D4-6T	HIGHLOAD-	J2-12
D4-7T	HIGHLOAD+	J2-11

SOUTHERN TECHNOLOGIES CORP.

TOLERANCE - UNLESS OTHERWISE SPECIFIED		DRAWN BY: CRH		APPROVED BY: CRH 09/18/23		NAME: SmartSCAN-NG ² Surge Panel Wiring		SCALE: NTS		DATE: 10 Jan. 2019	
HOLES (DIA) ±	ANG. ±					SERIES: NA		DRAWING NO. 1 OF 1		ST PART NUMBER W/2300556.dwg	
								REV. C			

CODE	ECO#	(DATE)	MADE BY
A		01/10/19	GRH
B	5463	05/05/23	GRH
C	5555	09/18/23	GRH